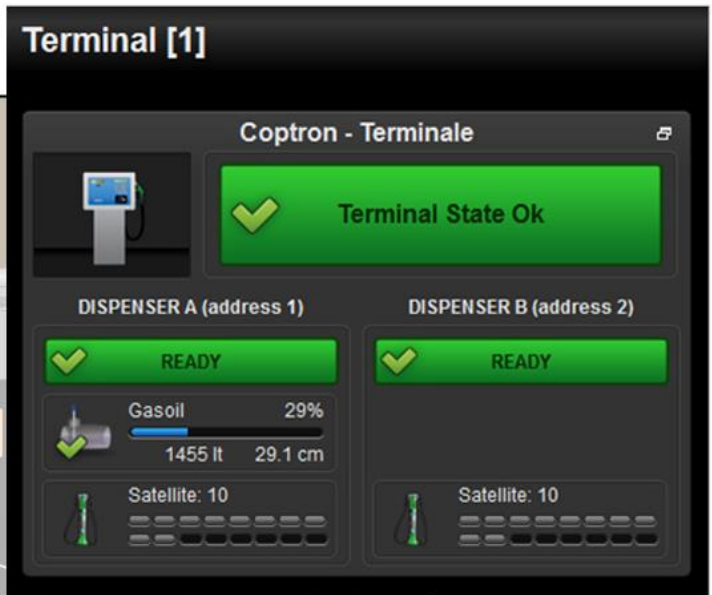


CopterLite Room CPTS01812



The screenshot shows the 'Delivery [7]' software interface. It features a table with columns for Date and Time, Station, Terminal, Dispenser, Nozzle, Satellite, Product, Type, and Volume. The table contains several rows of data. At the bottom, there are summary fields for 'Total volume:' and 'Kilometric consumption:'.

Date and Time	Station	Terminal	Dispenser	Nozzle	Satellite	Product	Type	Volume
2013-07-01 ...	Coptron	Terminale	1	1	2	Gasoil	Ok	
2013-07-01 ...	Coptron	Terminale	1	1	1	Gasoil	Ok	
2013-01-23 ...	Coptron	Terminale	1	1		Gasoil	Ok	
2013-01-23 ...	Coptron	Terminale	1	1		Gasoil	Ok	
2013-01-21 ...	Coptron	Terminale	1	1		Gasoil	Ok	
2012-07-18 ...	Coptron	Terminale	1	1		Gasoil	Ok	
2012-07-18 ...	Coptron	Terminale	1	1		Gasoil	Ok	

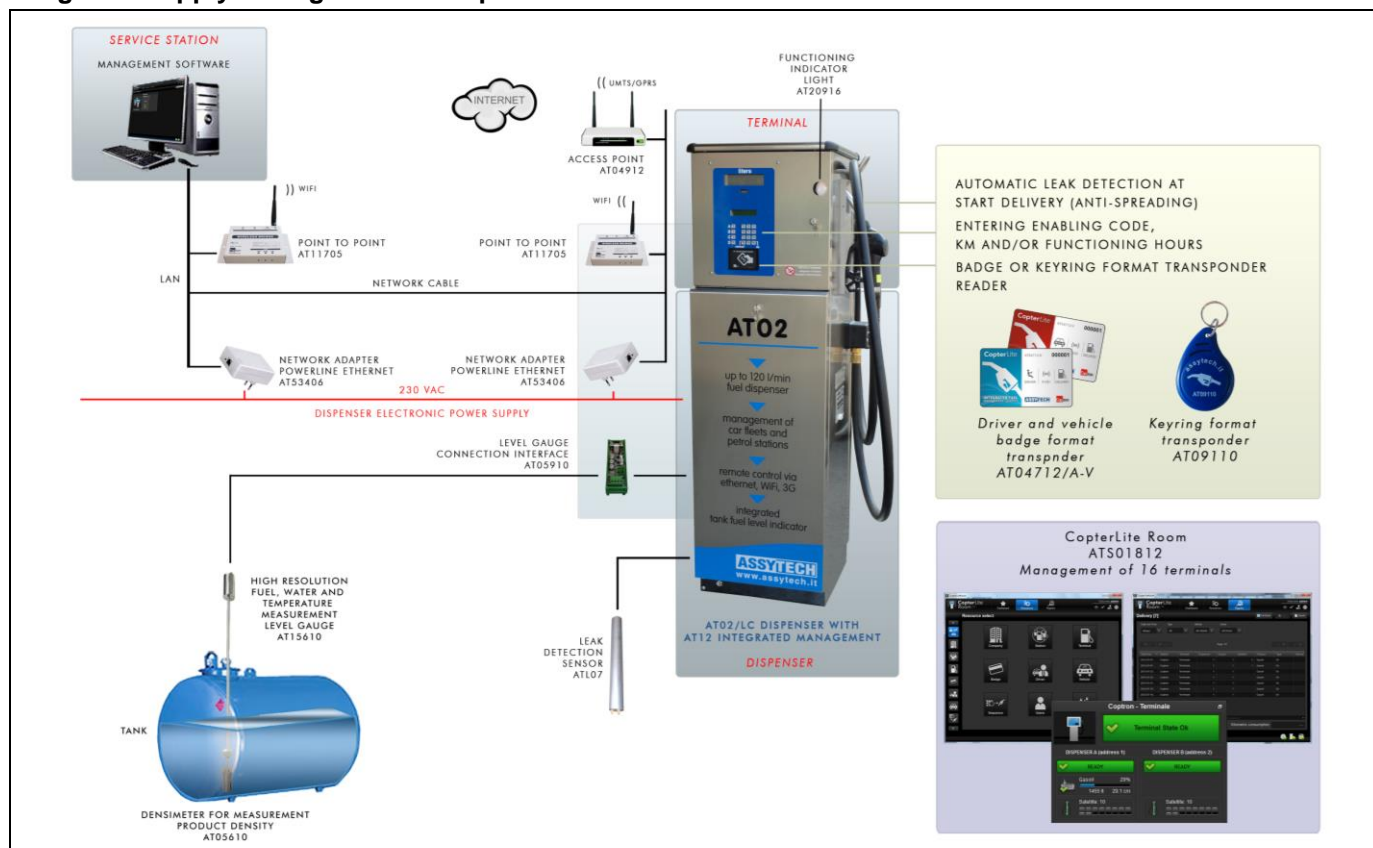
Total volume: 75.07 Kilometric consumption: ...

CopterLite Room software allows viewing and data management of the AT12 Series Refueling Management System.

Through a simple graphical interface, it is possible:

- View the data of the TERMINALS, DISPENSERS, TANKS and SATELLITES configured
- Configure stations and terminals
- Configure badges, drivers and vehicles and associate them with badges and terminals
- Configure the operational sequences
- View and print deliveries reports
- Enter manual delivery
- Import deliveries
- Export operational sequences and driver and vehicle badges
- View and export traces

Integrated supply management example



Minimum PC requirements

Processor	Core 2 Duo
Hard Disk	80 GB
RAM	4 GB
Video resolution	1024x768
Interfaces	1 porta LAN
Operatin system	Windows XP/Vista/7/8/10, Win Server 2003/2008, Ubuntu/Debian, Linux 64 bit

Code software

ATS01812	/VERSION
	/SFL: server full for the management of several plants
	/SLT: server lite for the management of one plant
	/CFL: client

Presentation subject to change without notice